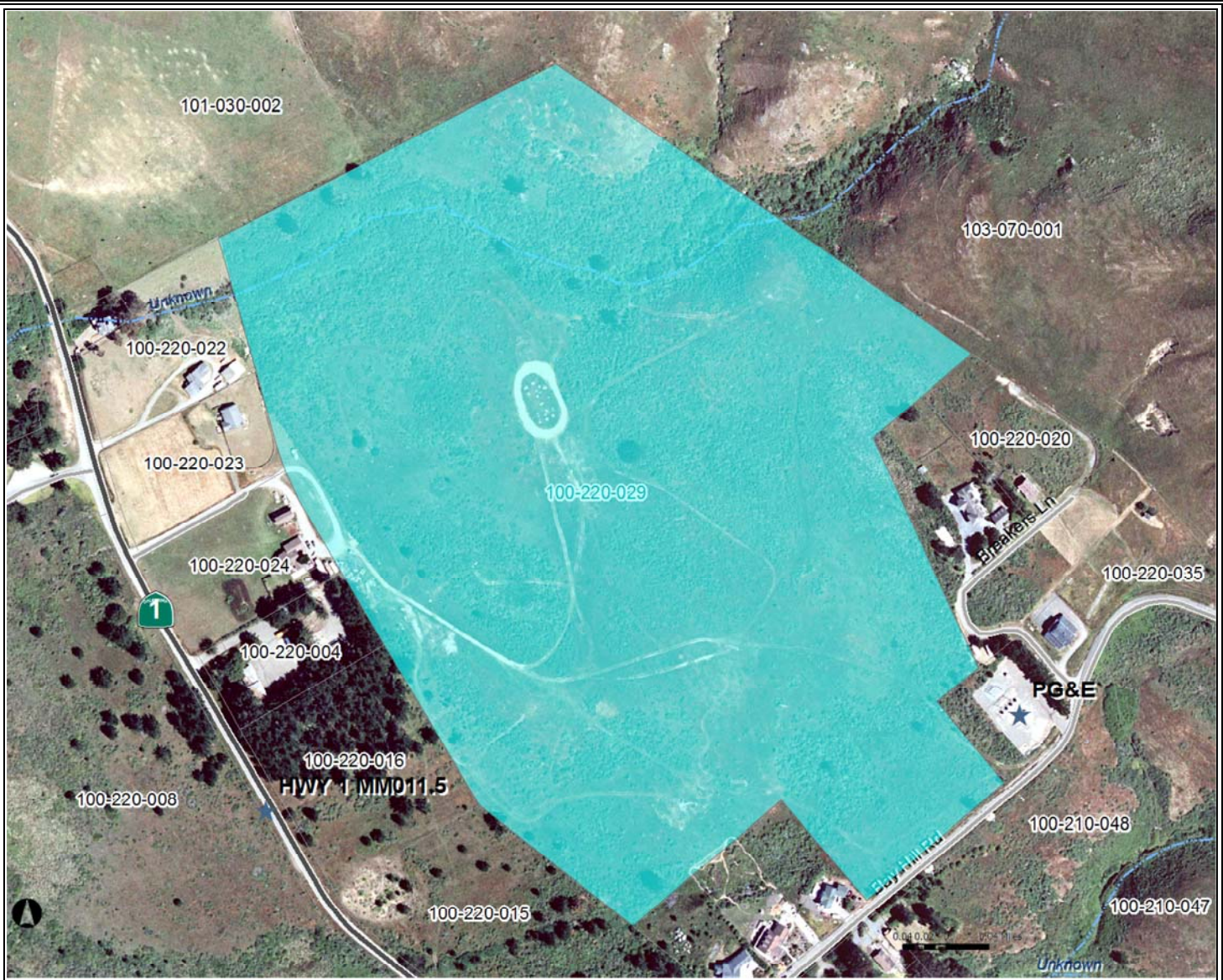




Base Map Theme



Planning

- Area & Specific Plans
- Local Area Development Guidelines
- Redevelopment Plans
- Williamson Act Land Contracts
 - Type I
 - Type I (Phase-out)
 - Type II
 - Type II (Phase-out)
 - Type II (Open Space)

Air Quality Measure

- Air Quality Control Board
 - Northern Sonoma County
 - Bay Area
- Well and Septic
 - Water Quality Control Board
 - North Coast Region
 - San Francisco Region
 - Waiver Prohibition Areas
 - Flood Prone Urban Areas

Wet Weather Zones

- Zone A - Petaluma
- Zone B - Sonoma
- Zone C - Santa Rosa
- Zone D - Sebastopol
- Zone E - Guerneville
- Zone F - Healdsburg
- Zone G - Cloverdale

Base Layers

- Geographic Places
- City Sphere of Influence
- City Urban Growth

Planning Areas

- Urban Service Areas
- Lake Sonoma
- Streets
 - US Federal Highway
 - State Highway
 - Major Road
 - Residential Street
- Streams
 - Perennial
 - Intermittent

Parcels

- City Limits
- Supervisor Districts
 - District 1
 - District 2
 - District 3
 - District 4
 - District 5
- Fire Protection Responsibility Area
 - Federal
 - State
 - Local

Map Scale and Reproduction methods limit precision in physical features displayed. This map is for illustrative purpose only, and is not suitable for parcel-specific decision making. Site-specific studies are required to draw parcel-specific conclusions. Aerial photos are provided by DigitalGlobe Copyright 2008.

Map Generated by: