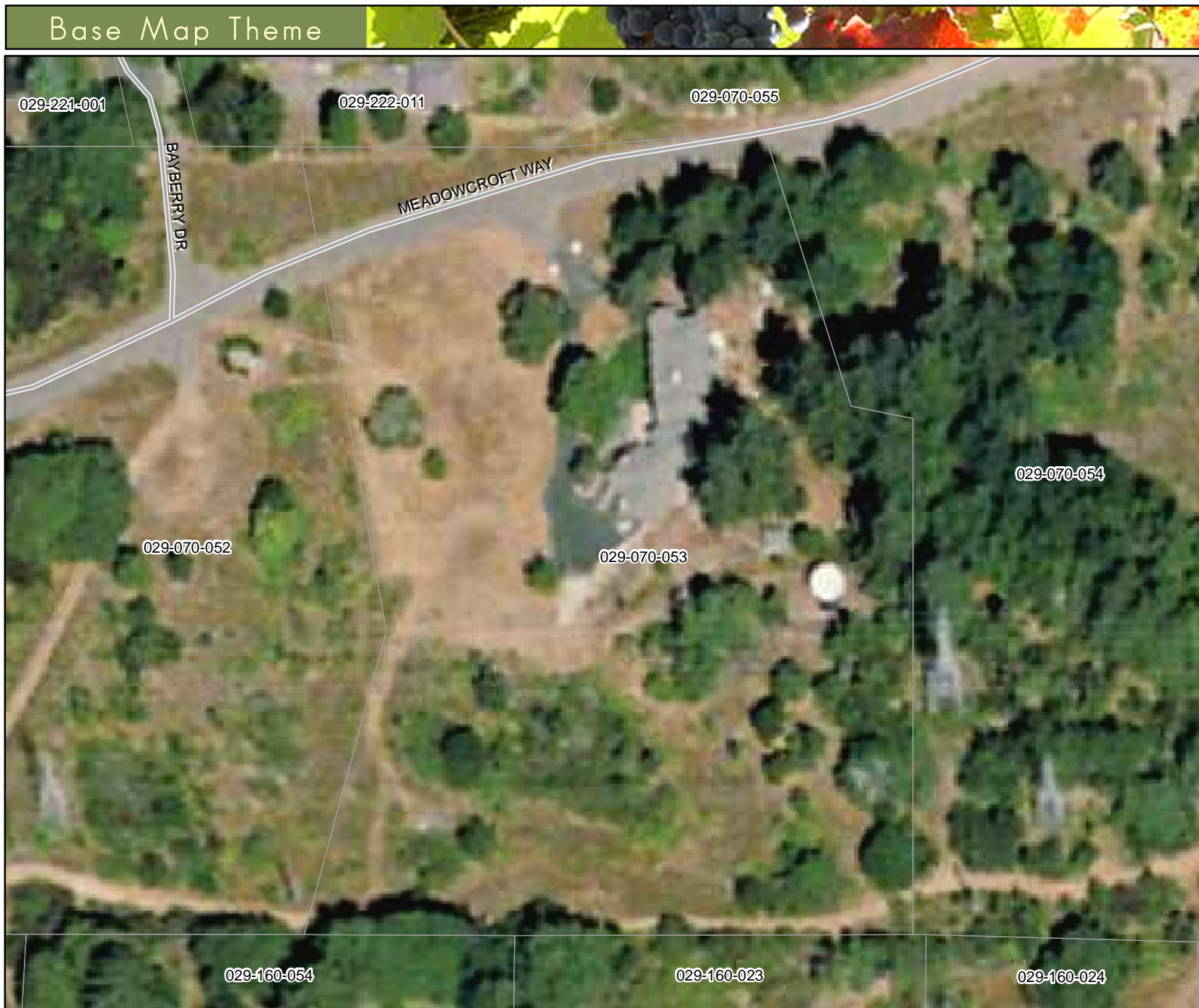


# Base Map Theme



## Legend

### PLANNING GUIDELINES

- Area and Specific Plans
- Local Area Development Guidelines
- Redevelopment Plans

### Williamson Act Land Contracts

- Type I
- Type I (Phase-Out)
- Type II
- Type II (Phase-Out)
- Type II (Open Space)

### AIR QUALITY MEASURES

- Air Quality Control Board
- Northern Sonoma County
- Bay Area

### WELL and SEPTIC GUIDELINES

- Waiver Prohibition Areas
- Water Quality Control Board
- North Coast Region
- San Francisco Bay Region
- Wet Weather Zones
- Zone A - Petaluma
- Zone B - Sonoma
- Zone C - Santa Rosa
- Zone D - Sebastopol
- Zone E - Guerneville
- Zone F - Healdsburg
- Zone G - Cloverdale

### BASE LAYERS

- City Limits
- City Spheres of Influence
- City Urban Growth
- Lake Sonoma
- Parcels
- Planning Areas
- US Federal Highway
- State Highway
- Major Road
- Residential Street
- Urban Service Areas
- Supervisor Districts
- District 1
- District 2
- District 3
- District 4
- District 5
- Perennial Stream
- Intermittent Stream

### PHOTOS

- Aerial Photos (August 2004)

Map Scale and Reproduction methods limit precision in physical features displayed. This map is for illustrative purpose only, and is not suitable for parcel-specific decision making. Site-specific studies are required to draw parcel-specific conclusions. Aerial photos are provided by DigitalGlobe Copyright 2008.



1 inch equals 89 feet



County of Sonoma  
Permit and Resource Management Department  
California



Map generated by:

ActiveMap