



WELL TESTING SERVICE

Ray's Well Testing Service Inc.
4853 Vine Hill Rd, Sebastopol Ca 95472
Phone 707 823 3191 Fax 707 317 0057 Lic# 903708

CUSTOMER INFORMATION

Table with 2 columns: Report details (REPORT #, CUSTOMER NAME, AGENT NAME, PROPERTY ADDRESS) and Test details (DATE OF TEST, CONTACT, CONTACT, SENT TO).

WELL DATA

Table with 2 columns: Well characteristics (LOCATION OF WELL, TYPE OF WELL, DEPTH OF COMPLETED WELL, DIAMETER OF WELL CASING, SANITARY WELL SEAL, ANNULAR SEAL, PUMP HP AND TYPE, DEPTH OF PUMP SUCTION).

WATER PRODUCTION RESULTS

Table with 3 columns: Water level and flow rate data (WATER LEVEL AT START, FINAL PUMPING LEVEL, WATER LEVEL DRAWDOWN, FLOW RATE AT START, FINAL FLOW RATE, TOTAL LENGTH OF TEST).

CONSTANT PUMPING LEVEL INFORMATION

Table with 3 columns: Pumping level and yield data (STABILIZED PUMPING LEVEL, DURATION OF CONSTANT PUMPING LEVEL, STABILIZED FLOW RATE (YIELD), TOTAL YIELD).

WATER SYSTEM INSPECTION

Table with 3 columns: Component status and technical info (WELL PUMP, ELECTRICAL, PRESSURE TANK, STORAGE TANK, BOOSTER PUMP).

WATER QUALITY TESTING

Table with 3 columns: Sample type, date, and turnaround (THE FOLLOWING SAMPLES ARE BEING ANALYZED. PLEASE REFER TO FOLLOW-UP REPORT FOR RESULTS).

SEE NEXT PAGE FOR FURTHER INFORMATION...

COMMENTS:

1. The recharge rate at the end of the test was 21.3 gallons per minute. This test may not represent the long term or seasonal yield.
2. The water was visibly clear, odorless and without sediment for the duration of the test.
3. The 3 HP 230V submersible well pump fills the concrete storage tank (tank water was visibly clear). The well pump is controlled by an electric float switch.
4. The 1 HP 230V Jacuzzi 1RM2-S domestic booster pump pressurizes two 85 gallon Well-Rite WR260 pressure tanks (tanks dated 2000/2000, 35/36 PSI air charges). The operating pressure is set 40 to 60 PSI. The domestic booster pump is protected from dry running by an electric float switch hung approximately 1/2 down the concrete tank. There is a toggle switch in the pump house that bypasses the float switch in an emergency. Note: when float is bypassed the booster pump is not protected from dry running.
5. The domestic water is treated by a Trojan UV Max model E4 ultraviolet unit with controller. At the time of the test the controller indicated the lamp should be changed in 51 days. The treated water lines serve the main house, guest house and local irrigation around houses. There is also a 2"x10" cartridge filter that serves a drinking tap at the main house kitchen sink.
6. The 1 HP 230V Jacuzzi 15H425-9/S vineyard irrigation booster pump pressurizes 7.6 gallon Well-X-Trol WX 103 expansion tank (tank dated 2014, 43 PSI air charge). The operating pressure is set 50 to 70 PSI. The vineyard booster pump is protected from dry running by an electric float switch. The float switch is hung slightly higher than the domestic booster pump float switch in order to give the houses priority if the tank runs low. There is a 1.25" cycle stop constant pressure valve and a 2" Wilkins Zurn backflow preventer plumbed on the outlet of the booster pump.
7. The upper vineyard irrigation line is treated by a 2" Arkal sediment filter and the lower vineyard irrigation line is treated by a two 2" Arkal sediment filters plumbed in parallel.
8. The lower vineyard irrigation is gravity fed but there is a crossover valve that allows for the vineyard irrigation booster pump pressure system to serve the lower vineyard if necessary.
9. There is bypass valve that allows for the vineyard booster pump to serve the domestic water lines or vice versa in an emergency.
10. There is an older well in the pump house that was not inspected or tested.

Thank you for allowing us to do your well inspection!

APPROVED BY: NICK BRASESCO



**CONTINUE TO NEXT PAGE FOR
RECOMMENDATIONS.....**

Water levels and well depth are measured as feet below top of well casing unless otherwise noted.

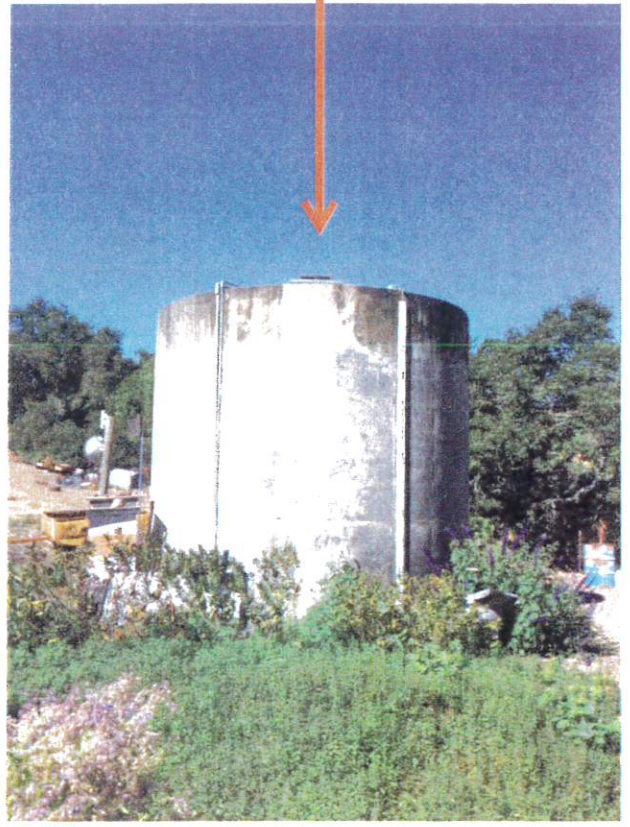
All wells and springs are subject to seasonal and yearly changes in regards to water yield, production and quality. Wells may be influenced by creeks or other water sources and are likely to yield less water during dry months of the year; typically August, September, & October. We make no predictions of future water production or water quality.

This report is for informational use only and is in lieu of and supercedes any other representation or statements of the agent or employee of the company, and all other such representations or statements shall be relied upon at the customer's own risk. The data and conclusions provided herein are based upon the best information available to the company using standard and accepted practices of the water well drilling industry. However, conditions in water wells are subject to dramatic changes in short periods of time. Therefore, the data and conclusions are valid only as of the date of the test and should not be relied upon to predict either the future quantity or quality the well will produce. The company makes no warranties either expressed or implied as to future water production and expressly disclaims and excludes any liability for consequential or incidental damages arising out of the breach of any expressed or implied warranty of future water production or out of any further use of the report by the customer.

Well Head



Concrete Storage Tank



Domestic Booster Pump



Domestic Pressure Tanks



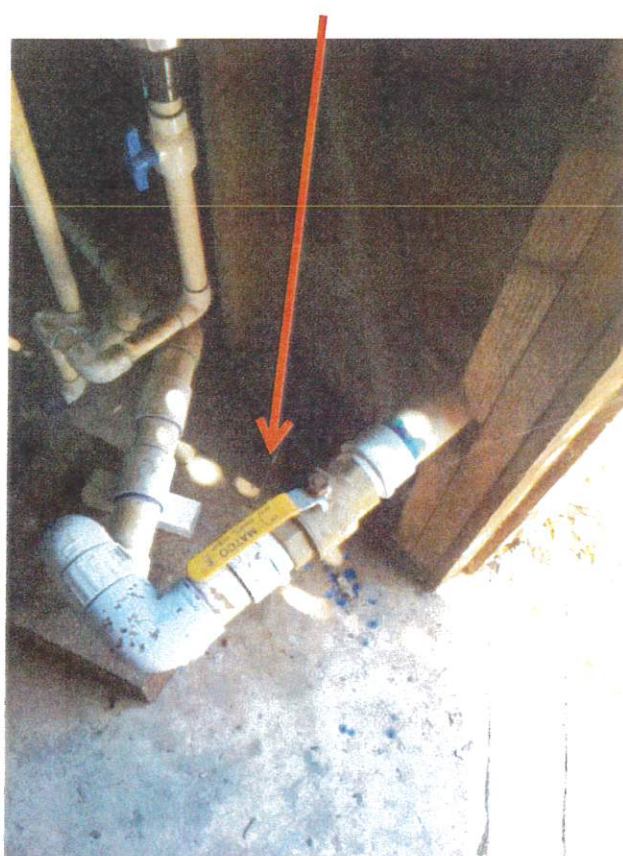
Domestic Pressure System Main Shut-off



Ultraviolet Unit



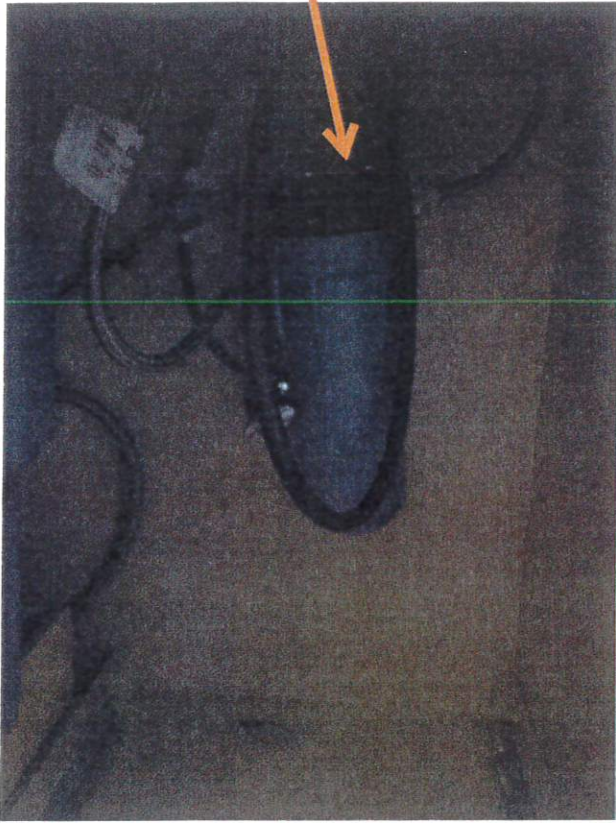
Main House Shut-off



Guest House Shut-off



Cartridge Filter @ Kitchen Sink



Vineyard Irrigation Booster Pump



Vineyard Irrigation Expansion Tank



Backflow Preventer



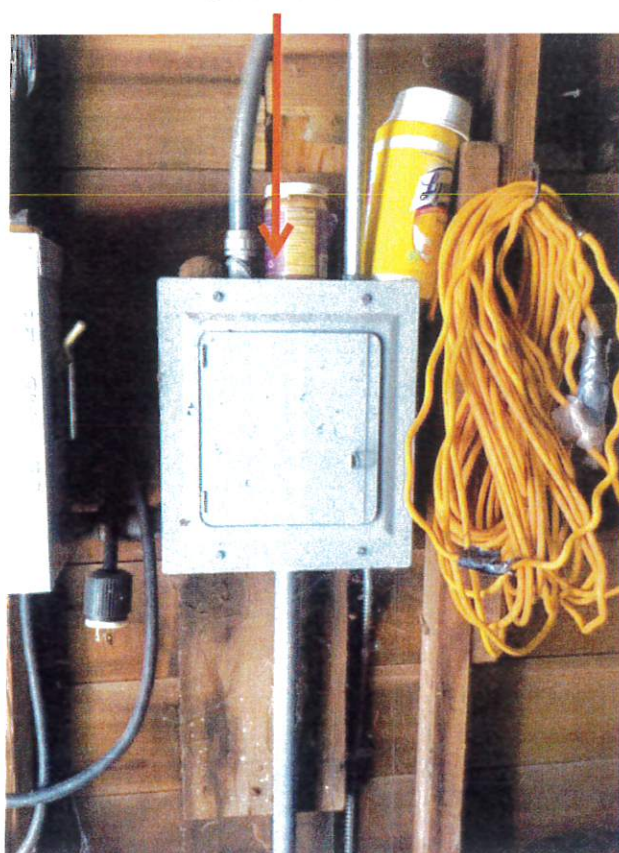
Upper Vineyard Irrigation Filters



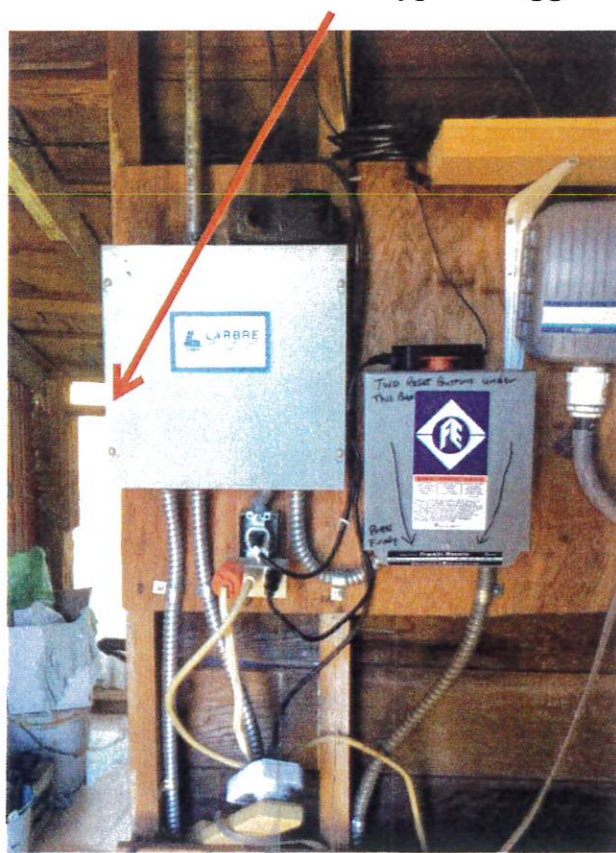
Lower Vineyard Irrigation Filters



Sub Panel



Domestic Float Switch Bypass Toggle



NOT INSPECTED
Old Well



RECOMMENDATIONS:

1. There is not a check valve at the well head, recommend installation.
2. If the domestic booster pump electric float switch is bypassed the booster pump is not protected from dry running, recommend installing another float switch at the bottom of tank to prevent damage to pump in an emergency.
3. The electric fill float switch does not have a weight, recommend installation.
4. There is not a sediment pre filter plumbed before the ultraviolet unit. There is not a flow control plumbed after the ultraviolet unit. Recommend installation.
5. Water test results and possible follow up recommendations pending.

Estimated costs per customer request (requires site visit to confirm costs):

Recommendations #1-4: \$1750 labor, materials and tax