

APN 106-230-008  
 USGS Quad: 18, Cazadero (40 Ft. Contour Interval)



Print Date: February 11, 2008

# USGS Topographic

County of Sonoma

Permit and Resource Management Department

2550 Ventura Avenue, Santa Rosa, California 95403

707-565-1900



V-1-1





APN 106-230-008 [40 Foot Contour Interval]

Color Services from Esri 2013. The 2013 imagery uses a Ground Sample Distance (GSD) resulting in a 4x4 pixel (meter, red, green & blue) with a high spatial resolution per pixel. The specified coordinate system for this data is California State Plane Zone II (NAD83) (402), NAD83 (2011), with units in US Survey Feet.

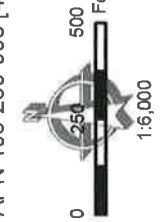
Map Scale and Reproduction methods limit precision of physical features and may not be suitable for engineering or professional design. This map is intended to provide a general overview of the parcel's location and is not intended to be used for engineering or professional design. Assessor's parcel data are current as of February 11, 2020.

# 2013 LiDAR Contours

County of Sonoma

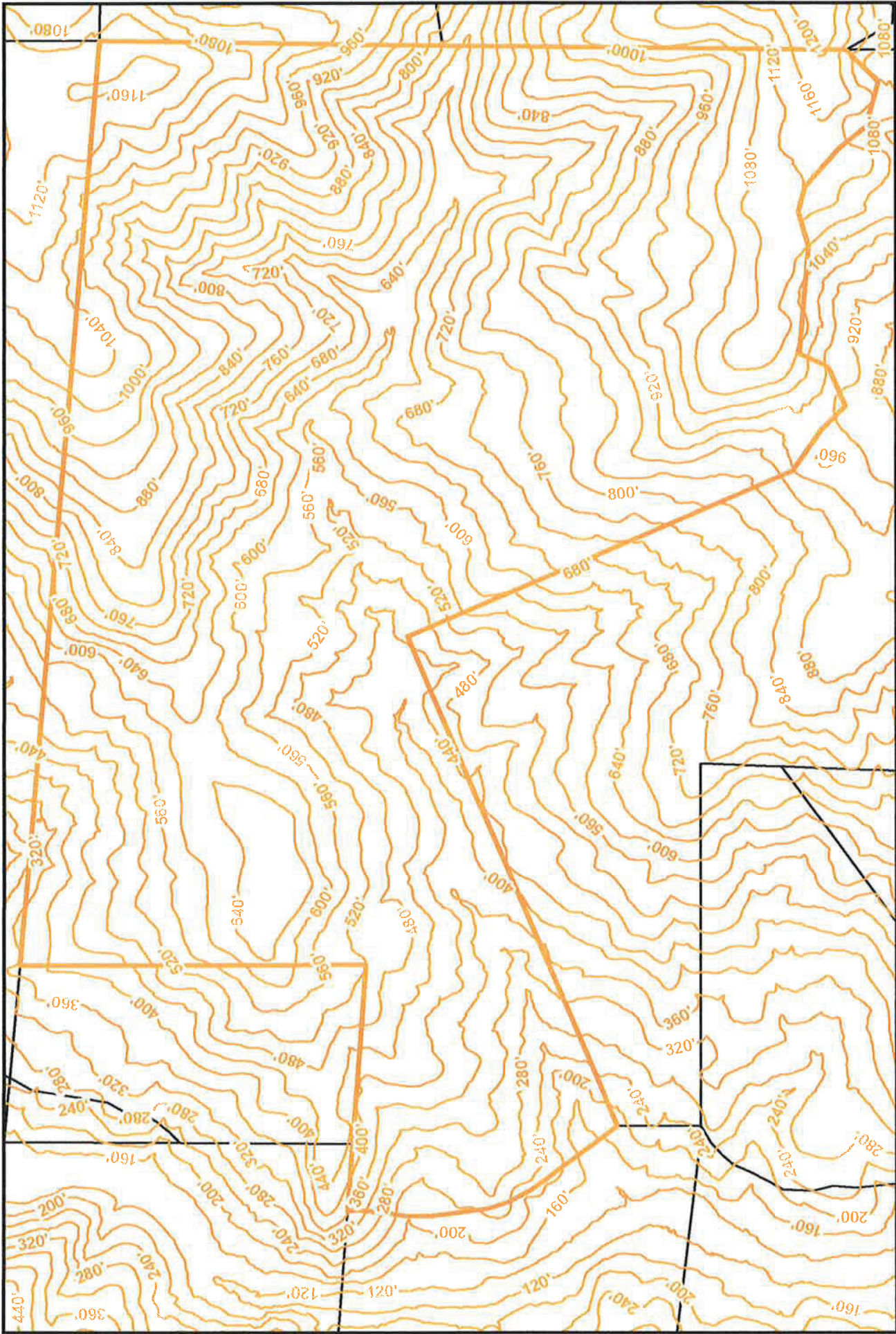
Permit and Resource Management Department

2550 Ventura Avenue, Santa Rosa, California 95403  
707-565-1900 FAX 707-565-1103



VI-2





APN 106-230-008 [40 Foot Contour Interval]

Color Sample from Fall 2013. The 2013 imagery uses a Ground Sample Distance (GSD) resulting in a 4-foot (feet) interval, and green & blue with a 6-inch spatial resolution per pixel. The specified coordinate system for this data is California State Plane Zone II (PPS 402), NAD83 (2011), with units in US Survey Feet.

Map Scale and Reproduction members limit precision in physical features and are not intended for use in engineering or other applications requiring high precision or for professional decision making. The above information is not intended to represent surveyed data. Site-specific maps are required to show parcel-specific contours. Most Assessor's parcel data are current as of February 11, 2020.



# 2013 LiDAR Contours

County of Sonoma

Permit and Resource Management Department

2550 Ventura Avenue, Santa Rosa, California 95403  
707-565-1900



11-3





APN 106-230-008

Source: The dataset consists of tiled, orthorectified imagery produced from nadir images captured by  
 Credits: Pixomatic, International and County of Sonoma CA 2018 Accuplus Project  
 Survey Information: Horizontal Datum - NAD83 (2011 Adjustment), California State Plane Zone II  
 (FIPS 0402); Vertical Datum - NAVD86, Goid 12B; Units - US Survey Feet  
 Parcel Data: February 11, 2020

2018 Ortho Imagery

County of Sonoma

Permit and Resource Management Department

2550 Ventura Avenue, Santa Rosa, California 95403



VI-4





**Wildwood Conservation Foundation**  
 501(c)3 Non-Profit Organization  
 #C2074655

**Address**  
 20111 Old Cazadero Rd.  
 Guerneville, CA 95446

**A.P. Numbers**  
 106-230-008

**Permit Application**  
 Zoning/Use Permit Application  
 Zone: Timberland Production  
 Use: Wildwood Retreat Center

**Prepared By**  
 Leif Glomset

**Drawn By**  
 Alexander Vincent

**Sheet Numbers**

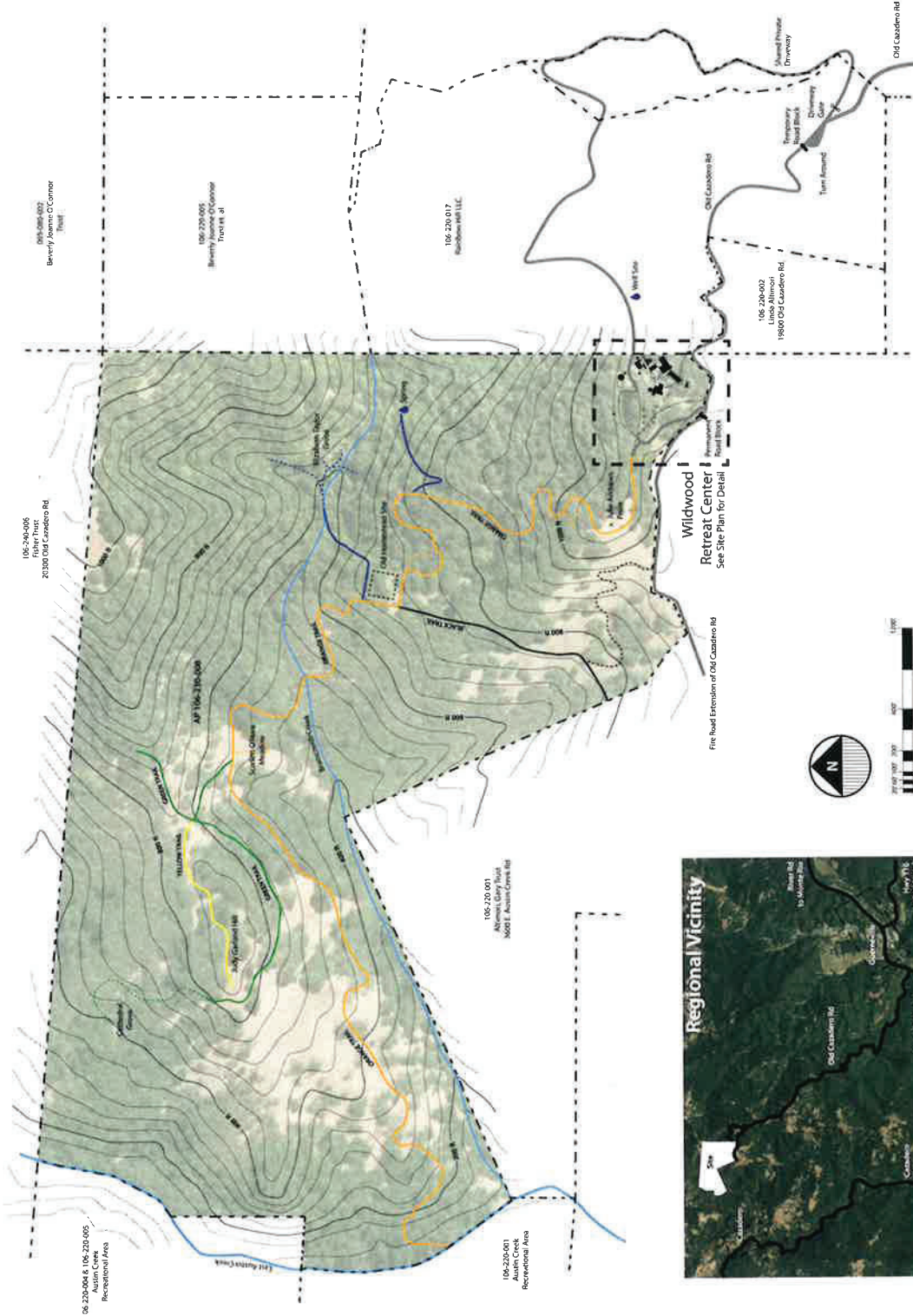
- VII Location Vicinity Map
- VIII Site Plan A
- IX Site Plan B
- X-1 Commons
- X-2 Guest Quarters
- X-3 Multipurpose Room
- X-4 Yurt
- X-5 Pool Area
- X-6 Staff Quarters A-H
- X-7 Staff Quarters K, L, & M
- XI Landscape Plan

**Date:** 12-Feb-2020

**Sheet #**

Title  
*site plan A*

Scale: 1/16" = 1'-0"



**Note:**  
 Exact location of buildings, site boundaries, and site features may differ from the approximate placement displayed.

**Legend**

- Road / Driveway
- Main Trail (Fire Road)
- - - Foot Trail
- ..... Parcel Boundary

