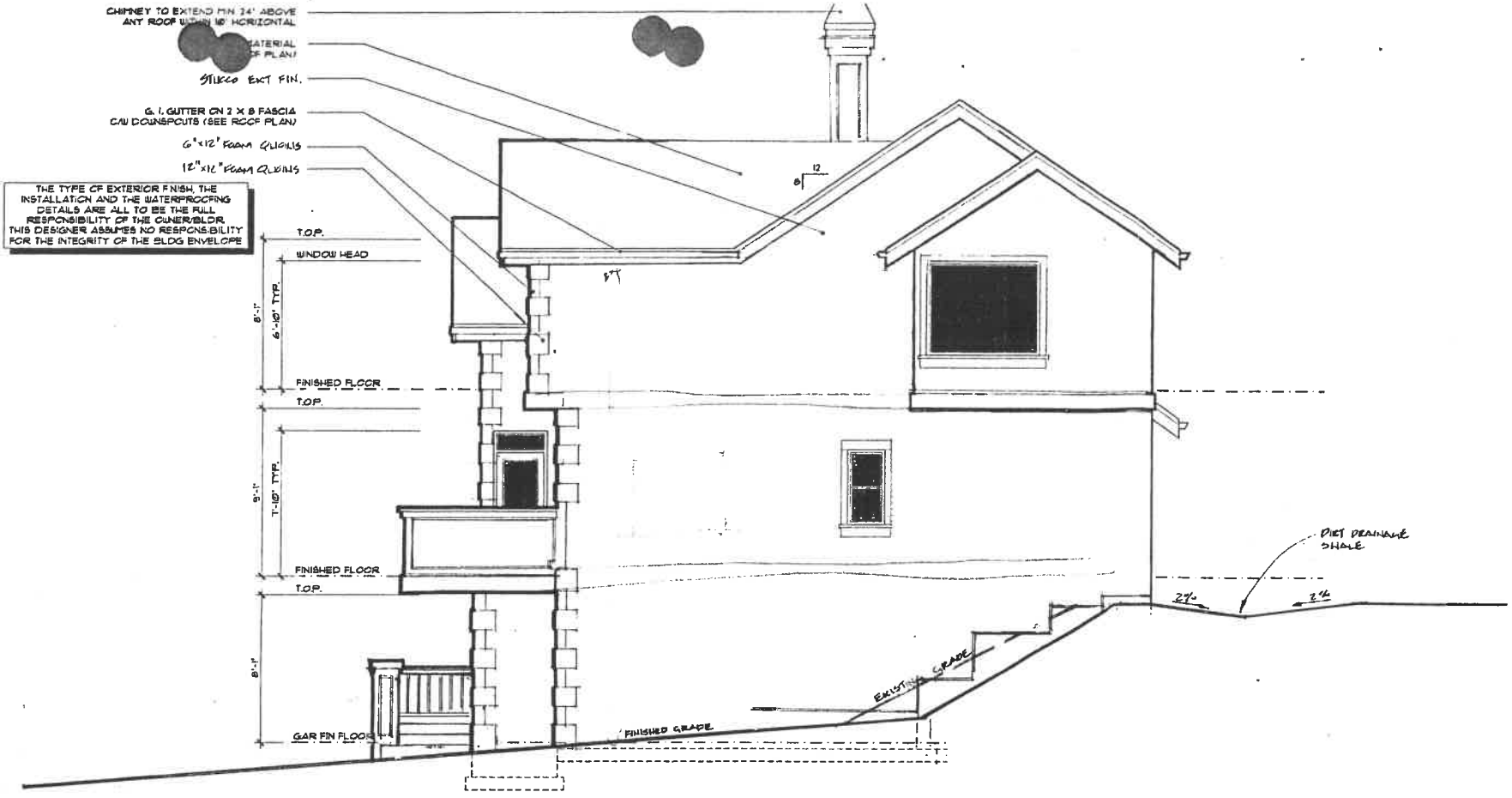
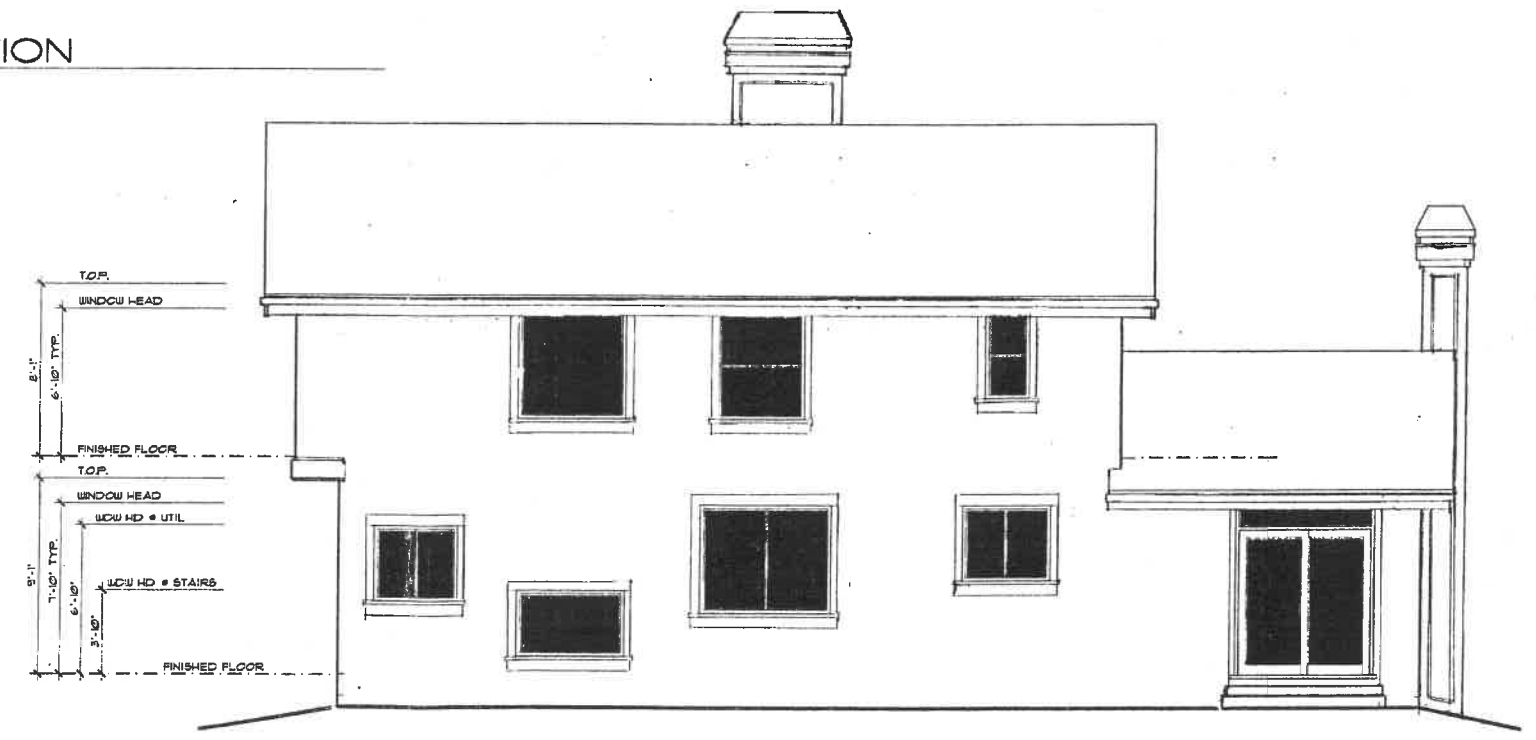


CHIMNEY TO EXTEND MIN 24" ABOVE ANY ROOF WITHIN 18" HORIZONTAL MATERIAL OF PLAN 91800 EXT FIN. 6" I. GUTTER ON 2 X 8 FASCIA OR DOWNSPOUTS (SEE ROOF PLAN) 6"x12" FOAM QUILTS 12"x12" FOAM QUILTS

THE TYPE OF EXTERIOR FINISH, THE INSTALLATION AND THE WATERPROOFING DETAILS ARE ALL TO BE THE FULL RESPONSIBILITY OF THE CONTRACTOR. THIS DESIGNER ASSUMES NO RESPONSIBILITY FOR THE INTEGRITY OF THE BLDG ENVELOPE

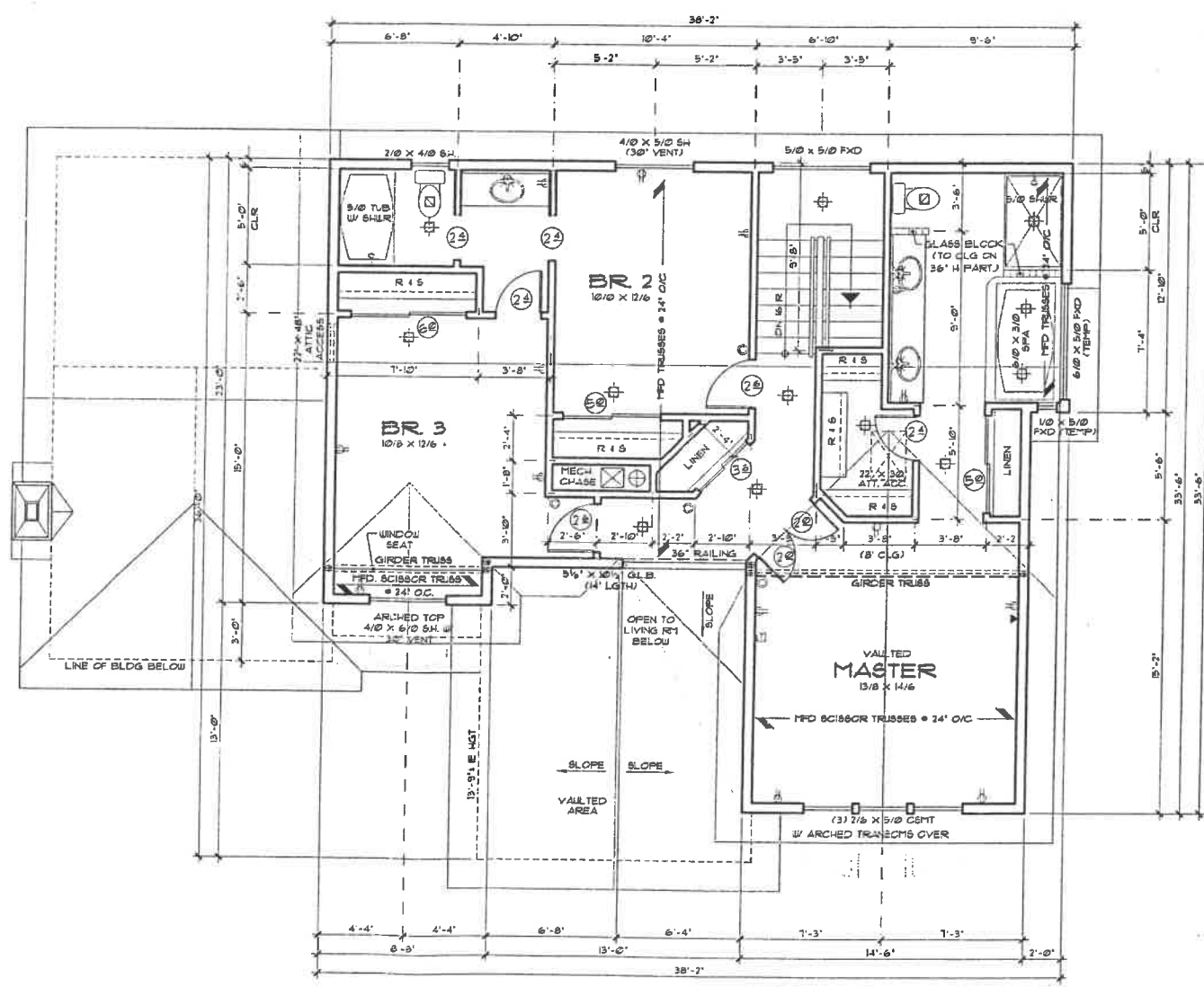


RIGHT SIDE ELEVATION
SCALE: 1/4" = 1'-0"



REAR ELEVATION
SCALE: 1/4" = 1'-0"

THE CONTRACTOR ASSUMES FULL RESPONSIBILITY FOR THE CORRECT INSTALLATION OF ALL EXTERIOR FINISHES AND WATERPROOFING



LEGEND

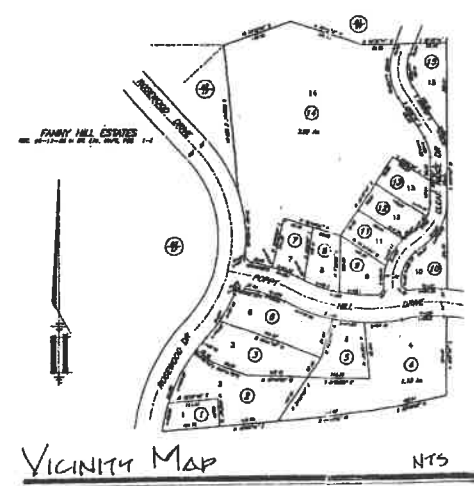
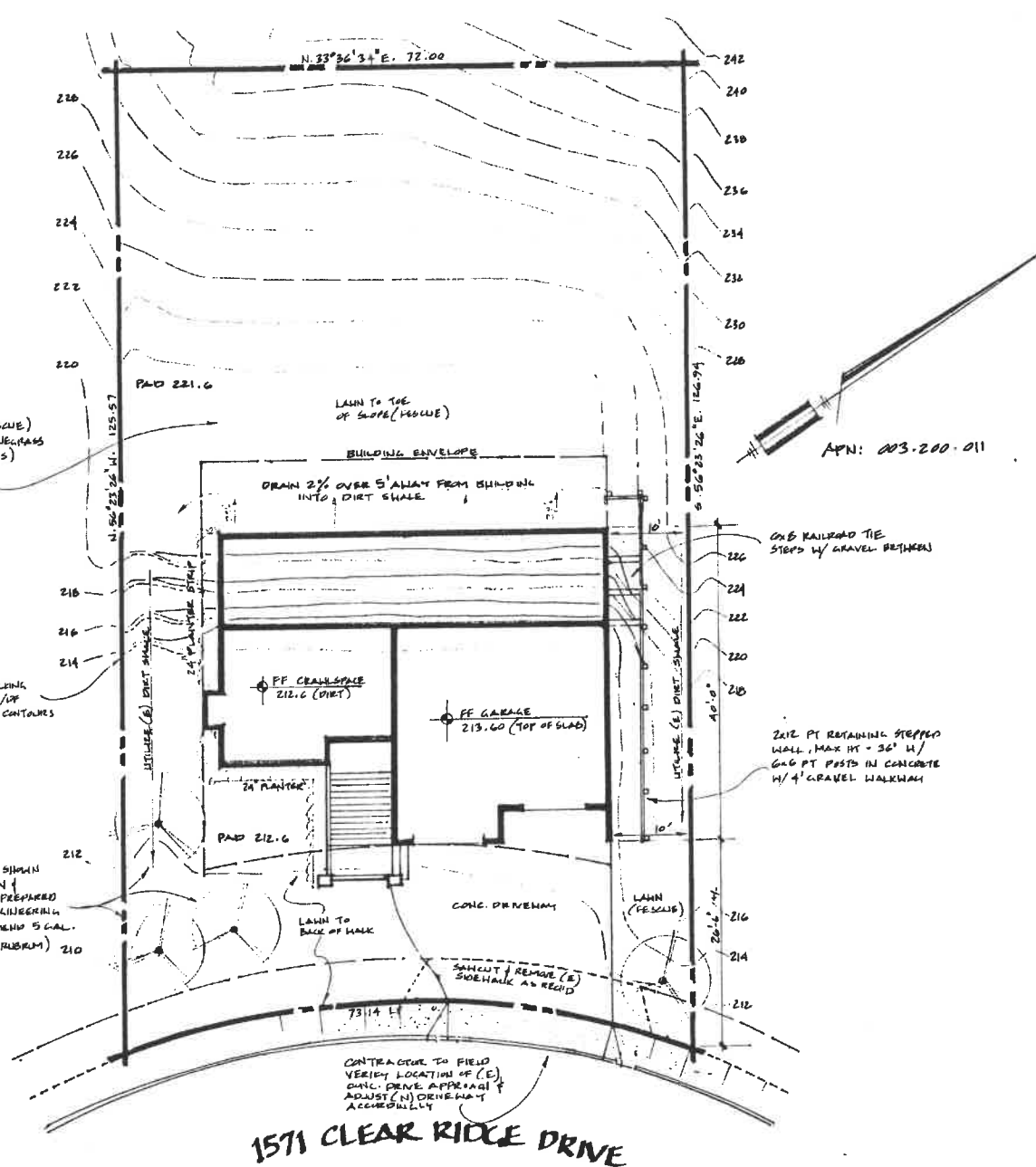
- ⊕ RECESSED INCANDESCENT
- ⊕ RECESSED DIRECTIONAL INCANDESCENT FIXTURE
- ⊗ WALL MOUNTED INCANDESCENT
- ◇ SURFACE MOUNTED INCANDESCENT
- ▮ SURFACE MOUNTED FLUORESCENT
- ⊠ RECESSED EXHAUST FAN VENTED TO THE EXTERIOR
- ✂ CASABLANCA TYPE CEILING FAN
- ⊕ DUPLEX OUTLET
- ⊕ CEILING MOUNTED DUPLEX OUTLET
- ⊕ 220V OUTLET
- ⊕ FLUSH FLOOR MOUNTED OUTLET (VERIFY LCC)
- ⊕ TELEPHONE OUTLET
- ⊕ DATA OUTLET
- ⊕ TELEVISION OUTLET
- ⊕ SPEAKER LOCATION
- ⊕ 120 VOLT SMOKE DETECTOR (SEE GENERAL NOTES FOR OTHER SPEC'S)
- ⊕ BEARING POINT LOCATION (PROVIDE SOLID BEARING MIN. OF MEMBER WIDTH UNL.)
- ⊕ POINT LOAD FROM ABOVE (4 X 4 POST FROM ROOF HIP, VALLEY OR RIDGE DOWN TO BEARING POINT ON WALL BELOW (MAX. OF 45' FROM VERT.) BEARING WALL SUPPORTING STRUCTURE ABOVE)
- ⊕ 4 X 4 HDR. # DR. OPENINGS OR FLUSH FLOOR FRAMING MEMBERS W/ BUILT-UP CCL. OF 3" X MEMBER WIDTH
- ⊕ DROPPED STRUCT. MEMBER BEARING WALL

S-FLOORING 06/70/28

UPPER FLOOR PLAN
 SCALE 1/4" = 1'-0"



Quality Craftsmen
 1571 CLEAR RIDGE DRIVE
 HEALDSBURG, CA 95448
 APN: 003-200-011



SITE PLAN

DEVELOPMENT INFORMATION

LOT SQ. FOOTAGE:	9974 #
BUILD. FOOTPRINT:	1676 #
OPEN SPACE:	8298 #
LOT COVERAGE:	16.82 %
TOTAL LIVING SPACE:	2422 #
F.A.R.:	24.68 %
ZONING:	R1-40,000

RECEIVED

AUG 09 2006

PLANNING & BUILDING DEPT
 CITY OF HEALDSBURG

1571 CLEAR RIDGE

A1